

TPA-09 XS size / M1.0

XS size and M1.0 type have been added to the insertion pad arm, TPA-09 (Gooseneck-Shape)!

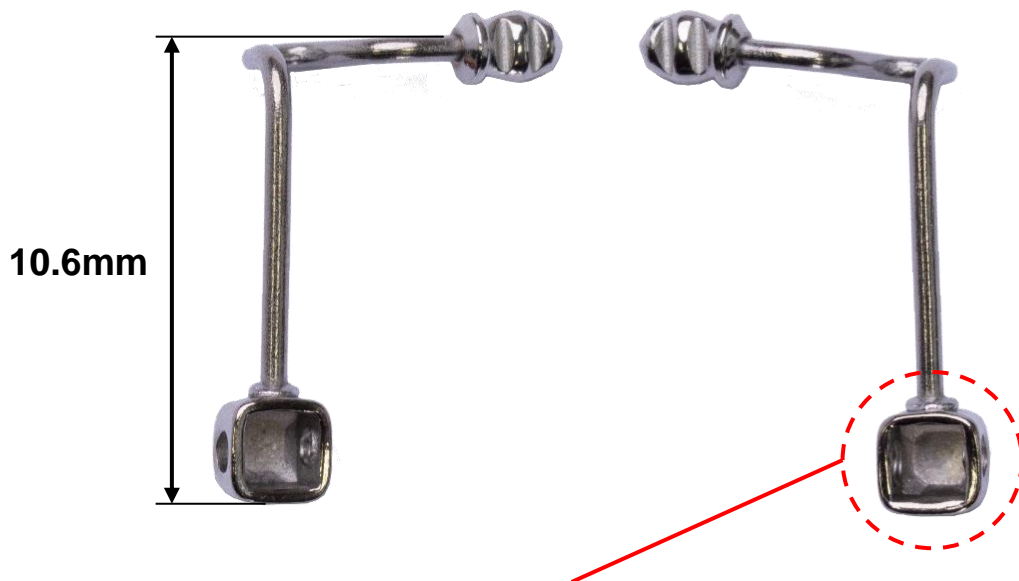
An optional "Open box type" which prevents dust and dirt from accumulating on the bottom of the box " is also available.

TPA-09 (Gooseneck-Shape)

M1.0 **New!** / M1.2

XS : 10.6mm **New!** / S : 12.6mm / M : 14.6mm

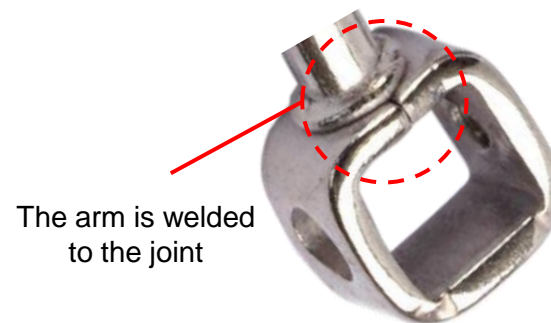
XS size



TPA-09 was previously available only in M1.2, but now M1.0 is also available.

Can be changed to open box as an option.

Dust or dirt does not accumulate on the bottom of the box!



The arm is welded to the joint

The open box has a neat square shape because the box is opened by bending the sheet material into a box shape and the arm is welded to the joint. In addition, the cost is less expensive than a conventional open box because the process is fewer than cutting a conventional open box.