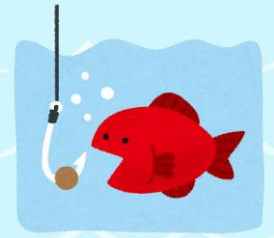


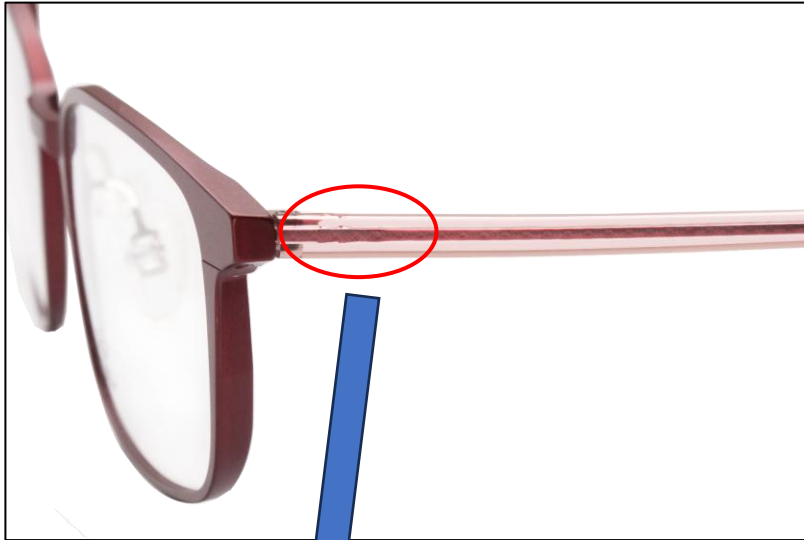


EV News Oct.

BARB temple



We made a temple inspired by “BARB”
— the backward-facing hook found on fishhooks and arrowheads
The long acetate temple tip can be fixed with a BARB, without using screws.



Small barbs are added near the joint of the metal core to prevent the long acetate temple tip from slipping off. The temple can be made slimmer because the temple tip is inserted without screws. In the case of full-metal frames, the temple can be colored together with the front.



Please feel free to contact us for questions at euro@eurovision.co.jp