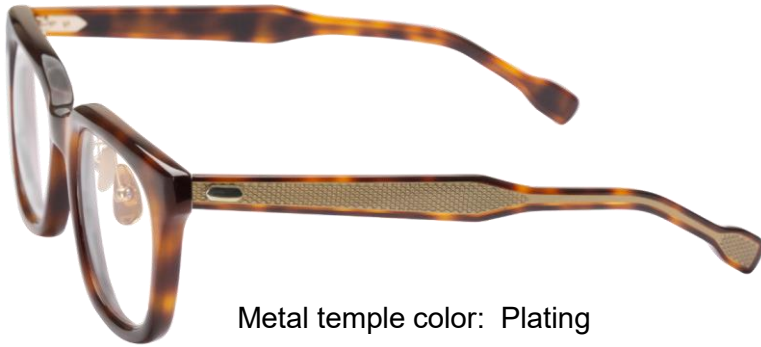


Acetate lamination temples have marketability but it is very difficult to process. However, we have successfully created a new process called "hybrid" which uses an acetate sheet and epoxy resin. Not only plating color but also painting color is available. Many design variations are possible other than normal acetate lamination temples.

*Ultraviolet absorber is included in the epoxy resin and has improved discoloration resistance. Moreover, discoloration would be less noticeable by choosing acetate colors with less noticeable discoloration and adding pigments to the epoxy resin.



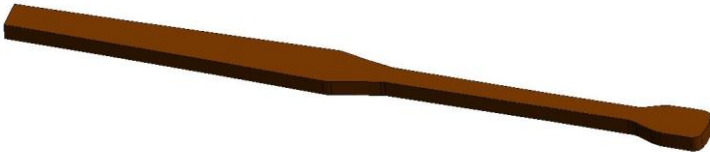
Metal temple color: Plating



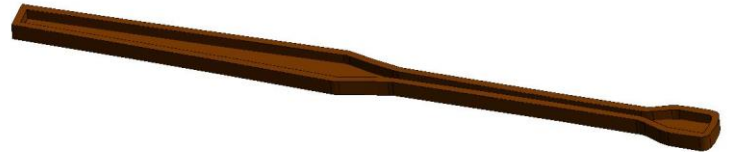
Metal temple color: Painting

How to make MEPO Hybrid

1. Obtain a temple cut from an acetate sheet.



2. Cut the space to put the metal temple.



3. Color the metal temple. (Not only plating color but also painting color is available)



4. Seal the metal temple in the epoxy resin and polish the resin to match the acetate surface. Complete!

