



Metal cap at temple tip

A metal cap is put on the inner side of the temple tip. This metal cap made of titanium gives the appearance of a high-end frame in its entirety. An adhesive is used for the metal cap and temple tip bonding. The adhesive complies with REACH regulations. We guarantee that the metal cap will not be removed with 1kgf.

Acetate colors are available from EV 172 standard colors.

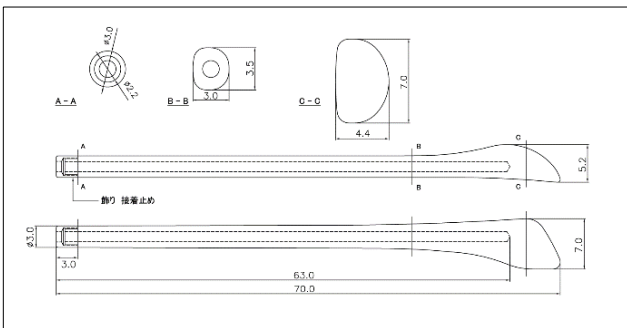


Material

Cap : made of titanium Temple tip : made of acetate

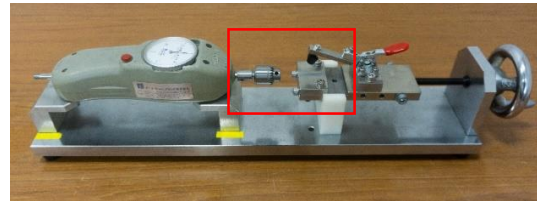
※It is possible to plate without nickel to the cap.

EV Standard design: KD-180918

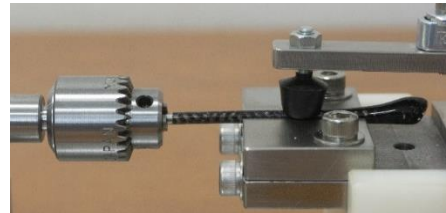


About adhesion strength of metal cap

An adhesive is used for the metal cap and temple tip bonding. **The adhesive complies with REACH regulations.**



Measure the adhesive strength of the metal cap using the Pulling Tester as shown in the picture.



Anchor the metal cap to the temple tip at two points as shown in the picture. And pull from the temple tip part and measure the strength.

Adhesive strength test of metal cap at temple tip

Samples: 15 pieces

	kgf	N
1	2.375	23.3
2	1.125	11.0
3	1.625	15.9
4	1.125	11.0
5	2.125	20.8
6	2.250	22.1
7	2.500	24.5
8	2.000	19.6
9	2.250	22.1
10	2.250	22.1
11	2.750	27.0
12	2.250	22.1
13	2.125	20.8
14	2.750	27.0
15	2.000	19.6
Average	2.100	20.6

Guarantee

We guarantee that the metal cap will not be removed with 1kgf.